

Converse
Elementary



PBIS



Expectation
Charts



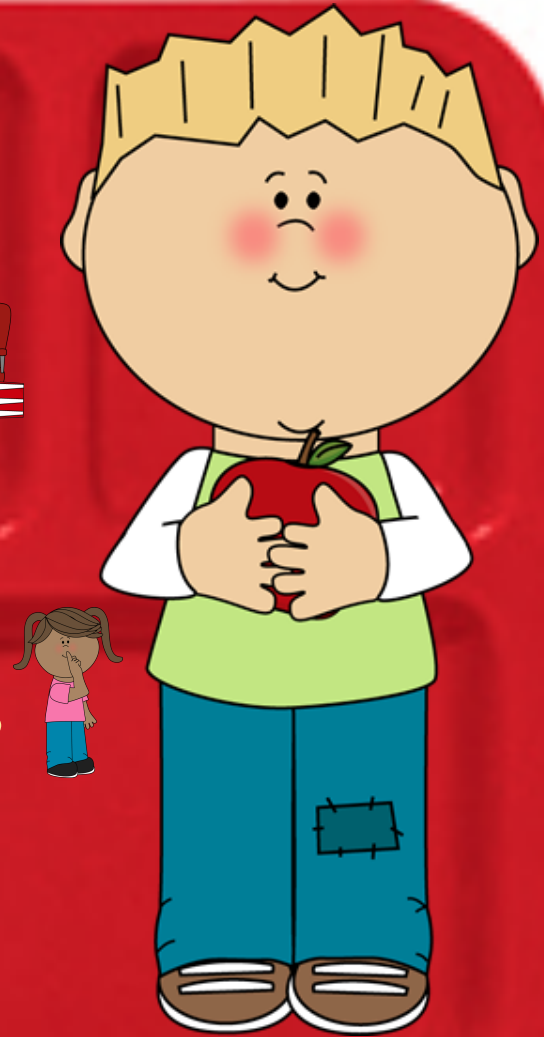
Breakfast Expectations

- Circle name on sheet
- Eat your food
- Use good manners
- Level 0-1 voice
- Clean up your area
- Use restroom and wash hands and face.

Be Respectful. Be Responsible.
Be Safe.

Lunch Expectations

- Eat your food 
- Clean up your area 
- Use good manners
- Level 1 voice 
- Exit third grade doors
- Use restroom 



Be Respectful. Be Responsible. Be Safe.

Bathroom Expectations

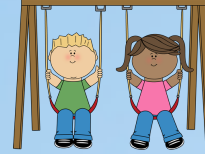
- Level 0-1 Voice
- Flush every time.
- Use only 1 pump of soap.
- Shake hands in sink.
- Use no more than 4 pumps of paper towels.
- Place paper towels in garbage can.



Be Respectful. Be Responsible. Be Safe.

Recess Expectations

- Use equipment correctly
- Dress appropriately
- Nice words
- Nice bodies
- Use restroom
- Level 1, 2, or 3
- Line up promptly



Be Respectful. Be Responsible. Be Safe.

Hallway Expectations

- Level 0 Voice
- Keep hands at side and avoid art work and printers.
- Walk on the right side of the hallway.
- Greet friends or teachers with a smile and wave only.
- Only go where directed to go.

Be Respectful. Be Responsible. Be Safe.



iPad Expectations

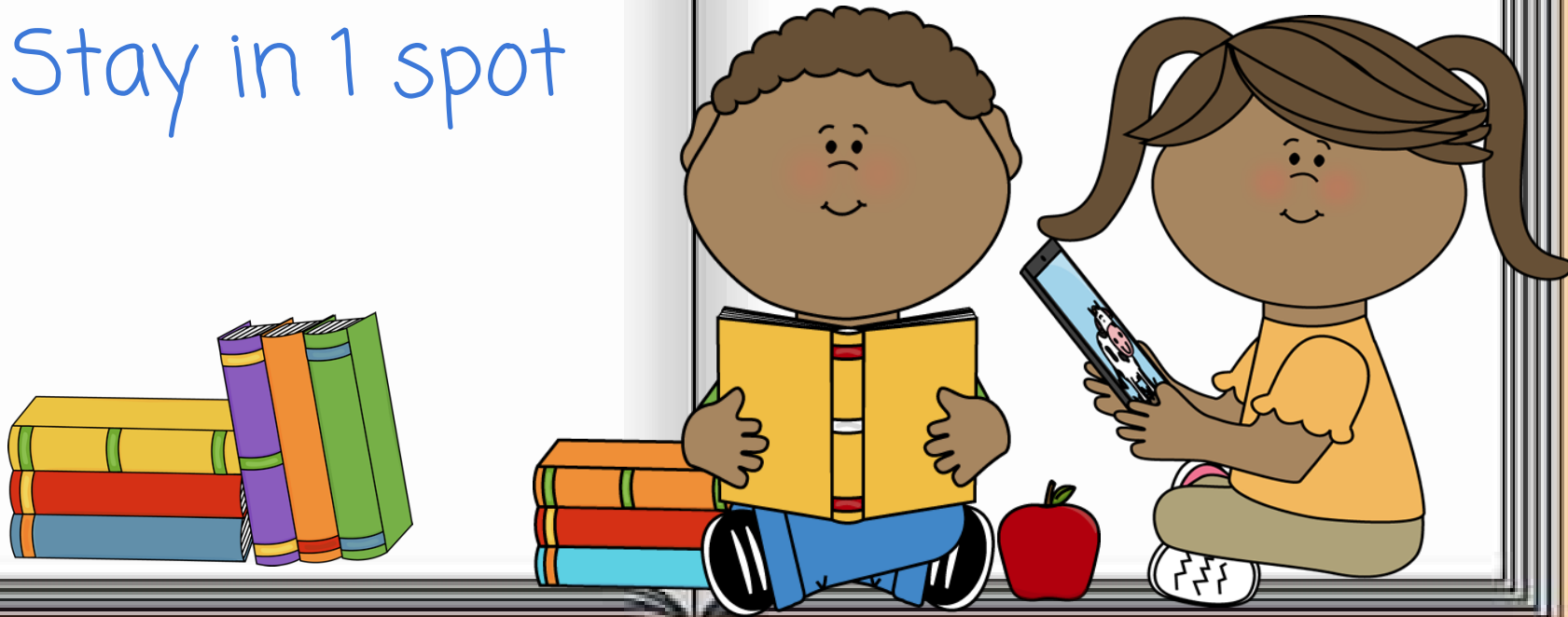
- Only use **your** iPad
- Hold iPad with two hands
- Walk with your iPad
- Keep desks closed
- Keep food and drink away from iPad
- Treat iPad and iPad cases with respect
- Use headphones on 0-4 volume
- Only use approved apps and websites



Be Respectful. Be Responsible. Be Safe.

Daily 5 Expectations

- Get started right away
- Use materials appropriately
- Work the whole time
- Level 0 or 1 voice
- Stay in 1 spot

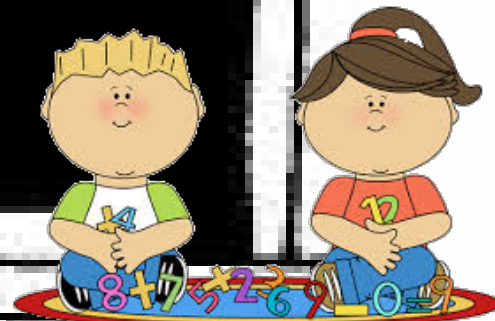


Math Expectations

- Level 0 or 1 voice
- Get started right away
- Use math supplies appropriately
- Work the whole time
- Problem solve: ask a friend, use iPads, look at math wall, or join a guided math group.

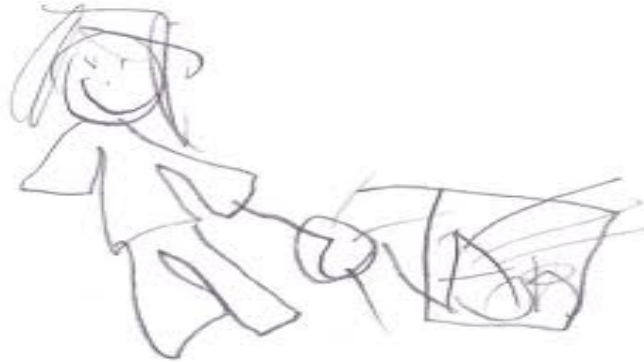


1 2 3 4 5
6 7 8 9 0



Be Respectful. Be Responsible. Be Safe.

Writer's Workshop K-1



- Level 0 - 1 voice
- Go to Writer's Workshop quickly and quietly & get started right away.
- Use the word wall for spelling
- Add a quick picture.
- Sit with partners.
- Write the whole time and no erasing!



Writer's Workshop-2

Level 0 - 1 Voice

Go to Writer's Workshop quickly and quietly.

Get started right away.

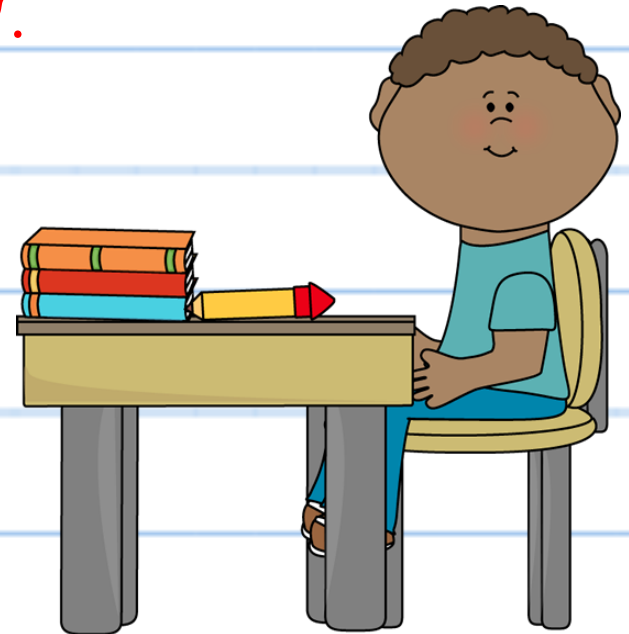
Skip a line

Sit with partners

Best spelling

Write the whole time

Use a pen. No erasing!



Writer's Workshop-3

Level 0 - 1 Voice

Go to Writer's Workshop quickly and quietly.

Get started right away.

Skip a line

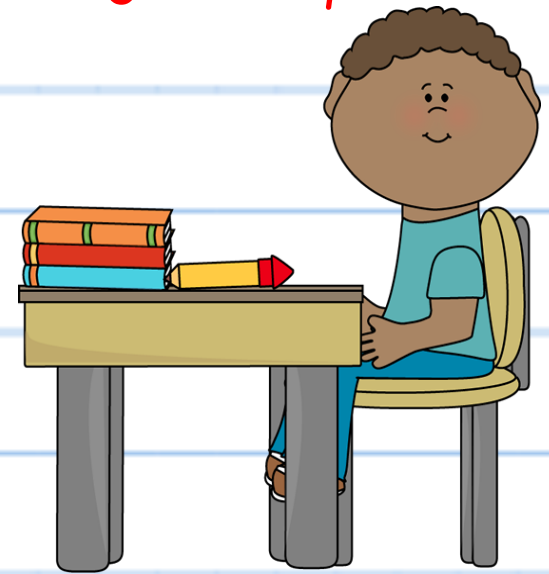
Sit with partners

Best spelling

Write the whole time

No Erasing!

Edit, Revise, Rewrite!



Music Expectations

Line basics

Level 0 Voice

Safe bodies

Appropriate words

Best Singing

Be Respectful. Be Responsible. Be Safe.

Be Respectful.

Be Responsible.

Be Safe.

Art Expectations

- Level 1 Voice
- Appropriate words
- Safe bodies
- Line basics
- Best art work



Gym Expectations

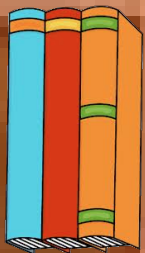
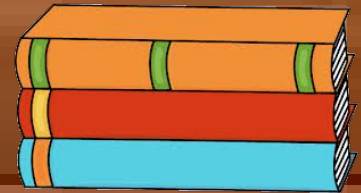


- Level 0-1 Voice
- Focus on directions
- Appropriate words
- Safe bodies
- Line basics

Be Respectful. Be Responsible. Be Safe.

Library

- Level 0 Voice
- Line basics
- Appropriate words
- Safe bodies
- Listen
- Choose a book at your level
- Follow directions
- Use computers appropriately



Be Respectful. Be Responsible. Be Safe.

Drill Expectations

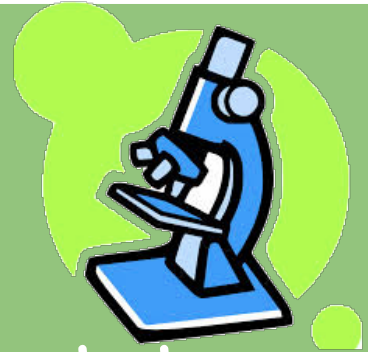
- Stay Calm
- Level 0 Voice
- Leave everything
- Push in chairs
- Line up quickly and quietly
- Line basics



Be Respectful. Be Responsible. Be Safe.

Science Lab Expectations

- Level 1 working voice
- Follow directions
- Work with your whole group
- Use safety equipment when needed
- Write about your experiment:



Lab report - Include materials used, questions, hypothesis (what you think will happen?), procedures, results (was your hypothesis correct?), and conclusion.



Be Respectful. Be Responsible. Be Safe.

Furniture Expectations

- Sit on your bottoms and feet on the floor.
- Use furniture appropriately
- Choose, take and then stay in one place.
- Make sure it helps you to focus or move to a chair.
- Share and take turns.
- Keep chairs at lowest level.
- Sit in, not throw selves into the beanbag chairs.
- Keep rocker at one level so it doesn't break.
- Keep feet and pencils off of furniture.